



# *BOOKTANICAL GARDEN*

## *A Horticulture and Floral Design Exhibition*

Presented by  
The Bartram Garden Club, Inc.  
Member of  
National Garden Clubs, Inc.  
Deep South Region  
Florida Federation of Garden Clubs, Inc.  
District IV

**Fernandina Branch of the Nassau County Public Library System**  
**25 N 4<sup>th</sup> Street, Fernandina Beach, FL 32034**

Friday, April 26, 2019    10:00 a.m. – 6:00 p.m.  
Saturday, April 27, 2019   10:00 a.m. – 5:00 p.m.

*Open and Free to the Public*

# *Table of Contents*

Message from the Club President	3
Officers and Flower Show Committee	4
General Rules	6
Awards	7
<b><u>Division I – Horticulture</u></b>	
Horticulture Rules	8
Horticulture Exhibits	9
<b><u>Division II – Design</u></b>	
Design Rules	11
Design Exhibits	13
<b><u>Division III – Education</u></b>	
Education Rules	14
Education Exhibits	15
<b><u>Division IV- Youth</u></b>	
Youth Rules	16
Youth Exhibits	17
<b><u>Division V – Botanical Arts Design</u></b>	
Botanical Arts Exhibits	18
About The Bartram Garden Club	19



# *Message from the Club President*

Welcome to The Bartram Garden Club's first flower show, *Booktanical Garden*.

The purpose of the *Booktanical Garden* exhibition is:

- To educate club members and the viewing public
- To stimulate an interest in horticulture and floral design
- To provide an outlet for creative expression
- To communicate National Garden Club, Inc. goals and objectives to the community.

An effort of this magnitude requires many helping hands, teamwork and enthusiasm. I am eternally indebted to the club officers for allowing me to pursue this dream; to the flower show committee for making it happen; to the club membership for your patient support; and to each exhibitor for sharing your creativity and horticulture expertise in order that we may achieve a show of excellence.

Special appreciation is extended to the Director, Assistant Director and the entire staff of the Fernandina Beach library. This public facility has provided the perfect backdrop for our design and horticulture exhibition.

Lastly, The Bartram Garden Club, Inc. wishes to thank the citizens of Fernandina Beach for allowing us to be a part of this amazing community.

We appreciate your attendance and hope you *Enjoy the Show!*

*Beverly Williams*

*"If you have a garden and a library, you have everything you need."*

*Cicero*

# *Welcome to the Booktanical Garden!*

## *The Flower Show Committee*

General Show Chairman	Beverly Williams	404-312-8530 bevthepatriot@gmail.com
Awards & Tabulation	Karen Reily	954-254-8999
Focal Area	Kathleen Lunman	904-310-9389
	Beverly Williams	404-312-8530
	Jan Mercer	229-798-8000
Dismantling	All members	
Name Tags/Signage/Entry Cards	Marc Williams	404-372-7475
Hostesses	Linda Broadrick	904-491-7759
Staging/Properties	Mariette Wooden	303-748-5505
Publicity/Photography	Linda Klingensmith	239-887-0773
Schedule	Beverly Williams	404-312-8530
	Mariette Wooden	303-748-5505
	Susan Lord	904-775-5171
Finance	Beverly Williams	404-312-8530
<b>Division I - Horticulture</b>		
Classification	Frances Tidd	770-883-2474
	Susan Borge	845-235-5062
Entries	Frances Tidd	770-883-2474
	Beverly Williams	404-312-8530
Placement	Jay Yates	727-365-2941
	Nancy Gladfelter	908-797-0105
<b>Division II - Design</b>		
Classification	Frances Ambrose	229-942-5307
Consultants	Carolyn Stevens	904-631-3395/904-247-8269
	Beverly Williams	404-312-8530
	Mariette Wooden	303-748-5505
	Susan Lord	202-492-2257
Entries	Susan Lord	202-492-2257/904-775-5171 sueblord@mac.com
<b>Division III - Education</b>		
Entries	Kathleen Lunman	904-310-9389
	Peg Lehosit	904-910-1014
Consultant	Kathleen Lunman	732-895-9234/904-310-9389

**Division IV – Youth**

Entries &amp; Classification

Beverly Williams

404-312-8530

Susan Lord

202-492-2257

Consultant

Beverly Williams

404-312-8530

Sue Lord

202-492-2257

**Division V – Botanical Arts****Design**

Classification

Frances Tidd

770-883-2474

Consultant

Frances Tidd

770-883-2474

Entries

Susan Lord

202-492-2257/904-775-5171

*Club Officers –**President, Beverly Williams**Vice President, Kathleen Lunman**Secretary, Kathye Reily**Treasurer, Reha London*

# *General Rules*

1. All classes in Divisions I, II, and V are open to members of NGC. Division I – Horticulture, is also open to any amateur gardener. Divisions III and IV are by invitation.
2. Horticulture entry cards are available from the general show chairman, Beverly Williams, listed under Flower Show Committee page 2 beginning on April 15, 2019. Design entry cards will be provided by the show committee when designs are placed.
3. All exhibitors will be allowed to view the show floor plan during a workshop at the library April 15<sup>th</sup>. The walk-through will begin at 11:00 a.m.
4. All entries will be accepted on **Thursday, April 25, 2019 between 11:00 a.m. and 3:00 p.m.**, with the exception of Division IV. **Youth entries will be placed between 11:00 a.m. and 6:00 p.m. the same day.**
5. All exhibits must be removed by 6:00 p.m. on Saturday, April 27 but not before 5:00 p.m. Any remaining entries will be disposed of without notification.
6. The Classification Chairman for each division must check exhibits for conformity to the schedule and initial the entry card.
8. There must be an emphasis on FRESH plant material. **No artificial or treated fresh plant material is permitted in any exhibit in any division.**
9. The Bartram Garden Club, Inc. will strive to assure the safety of all items after arrival and placement, but is not responsible for any loss or damage to exhibits. All properties must be marked with the exhibitor's name.
10. The use of plant material classified as Federal Noxious is prohibited. See [www.aphis.usda.gov/plant\\_health/plant\\_pest\\_info/weeds/downloads/weedlist.pdf](http://www.aphis.usda.gov/plant_health/plant_pest_info/weeds/downloads/weedlist.pdf)
11. The use of plant material on Florida's Federally Listed Plant as endangered or threatened is prohibited. See [www.plants.usda.gov/java/threat?statelist=state&stateSelect=US12](http://www.plants.usda.gov/java/threat?statelist=state&stateSelect=US12)
12. Native plants may be entered provided such plants have been legally obtained and grown by the exhibitor for at least three months.
13. No solicitation material may be used in any exhibit.

**Exhibitors are responsible for carefully reading  
the General, Horticulture, Design, Education, Youth,  
and Botanical Arts rules of this schedule.**

## *Division Awards*

### *People's Choice Horticulture Award*

Awarded by ballot of attendees to an outstanding exhibit in the Horticulture Division I.

### *People's Choice Design Award*

Awarded by ballot of attendees to an outstanding exhibit in the Design Division II.

### *William Bartram Horticulture Award*

Awarded by the Flower Show Committee to the most outstanding exhibit in the Horticulture Division I.

### *William Bartram Design Award*

Awarded by the Flower Show Committee to the most outstanding exhibit in the Design Division II.

### *Award of Appreciation*

Awarded by The Bartram Garden Club.  
to exhibitors in the Youth Division IV.

# *Division 1 – Horticulture Rules*

1. All General Rules on page 6 of this schedule apply.
2. All exhibits must be FRESH and in prime condition.
3. All exhibits must have been grown by the exhibitor.
4. Invasive or endangered plants are prohibited. See rules 10 and 11 on page 6 of this schedule.
5. Plant material must be in its natural state and may not be altered by application (treatment) of oil, commercial “shine” products, etc., that change the natural appearance. No wiring of specimens is permitted.
6. Only foliage and/or flowers naturally grown and still attached to the specimen are permitted in the flower show. Unattached foliage is never included with a cut bloom specimen.
7. All plant material must have been in the possession of the exhibitor a minimum of 60 days.
8. All exhibits should be show worthy, well-groomed and in clean pots if container-grown.
9. The rules for a single species cut or container-grown specimen are listed in HB pp. 58 – 59, or its supplement *Horticulture Exhibiting and Judging*.
10. The exhibitor must identify her/his entry by its binomial name or currently acceptable scientific designation. Common names may be included in parenthesis. Binomial names are written in pencil and both the genus and species are underlined. Variety is recommended. The genus is capitalized and the species is not.
11. Entry cards are to be filled out in advance if possible, and must be written in pencil or water-proof ink. Example: HB, p. 57. Cards will be available on or before April 15<sup>th</sup> from the committee.
12. Cut specimens should not have foliage below the water line, except for *Gladiolus*.
13. If a plant is considered a flowering plant, it should be exhibited as a flowering specimen. Foliage plants may flower, but should be exhibited as foliage plant if they are grown for their leaves.
14. Specimens with a class designation in the schedule may not be entered in the ‘Any Other Worthy’ class.
15. The Horticulture Classification Committee Chairman and/or General Show Chairman are free to subdivide classes by color, form, size, cultivar, variety or other distinguishing characteristics.
16. The exhibitor must use clean, clear glass containers for cut specimens. The bottles should be free of writing or labels and in scale with the size of the specimen.
17. The show committee will furnish wedging and some bottles.
18. Double potting is permitted but the inner pot must not be visible.
19. A maximum of 10 exhibits per person or household is allowed in the horticulture division.
20. Exhibitors may enter more than one specimen per class if each entry is a different variety, cultivar, or color.





## *Division 1 – Horticulture*

### *Nodes of Non-Fiction*

Eligible for the People's Choice Award and the William Bartram Award

#### **Section A. *Superlative***

Container-grown flowering or colorful bracts. Container not to exceed 14" in diameter. Double potting is allowed but the inner container must not be visible.

Class

1. Bromeliad
2. Orchidaceae
3. Saintpaulia (African violet)
4. Any other worthy named specimen

#### **Section B. *Drama***

Container-grown foliage. Container not to exceed 14" in diameter. Double potting is allowed but the inner container must not be visible.

Class

5. Begonia
6. Fern
7. Succulents
8. Any other worthy named specimen

### **Section C. *Epic***

Herbaceous Flowers

Cut blooming specimen, one stem or spray not to exceed 30" unless otherwise noted. Include foliage if attached on stem.

Class

- 9. Crinum
- 10. Liliium
- 11. Rosa
- 12. Any other worthy named specimen

### **Section D. *Melodrama***

Herbaceous Foliage

Cut foliage specimen, one stem not to exceed 30"

Class

- 13. Alocasia (Elephant's Ears)
- 14. Aspidistra (Cast Iron Plant)
- 15. Cordyline (Ti Plant)
- 16. Monstera (Split-leaf Philodendron)
- 17. Sansevieria (Mother-in-law, Snake Plant)
- 18. Any other worthy named specimen

### **Section E. *Hyperbole***

Arboreal Shrubs and Trees

Fresh cut branches from evergreen or deciduous shrubs or trees grown for the beauty of foliage, flowers, fruit or cones. Maximum length 30 inches. Must include several nodes and an apical tip.

Class

- 19. Foliage branch
- 20. Flowering branch
- 21. Fruited/Coned/Berried



## *Division II– Design Rules*

1. All General Rules on page 6 of this schedule apply.
2. Some plant material, fresh and/or dried must be used in every exhibit.
3. Exhibitor may enter multiple classes.
4. The exhibit entered into competition must be the work of only one (1) exhibitor and that exhibitor's name must appear on the entry card provided by the show committee.
5. Exhibitor is responsible for keeping all plant material fresh for the duration of the show.
6. If the designer is unable to fulfill the assignment, it is the designer's responsibility to provide a substitute and notify the entries chairman, Sue Lord.
7. If the designer is unavailable to transport and/or set up her/his completed design, a substitute person may enter the exhibit for the designer.
8. A single flower is *not* a design. Container-grown plants are permitted but are *never* considered floral designs.
9. Landscapes, scenes or anything representing an actual item of clothing, person, animal, etc., are *not* acceptable in the Design Division.
10. Religious symbols used in a design must be displayed in a respectful manner.
11. Plant material used in the design must be listed on a card provided by the show committee and included with the entry card. Botanical and/or common name acceptable. A brief interpretation of the design is encouraged. Card provided by committee.
12. Products manufactured from plant material whose natural state has been so altered as to be given a new identity and a specific name, such as rope, basket, mat, etc. are permitted.
13. Decorative wood is allowed.
14. The exterior appearance of dried plant material may be altered.
15. The use of glycerin, bleach, anti-freeze, etc. on fresh plant material to change the natural dried state is permitted.

16. Contrived plant material (fantasy flower, foliage and/or stem) is allowed.
17. Dried man-made components such as grape vine forms retaining their recognizable character are considered dried plant material.
18. Living plants with roots attached, such as moss, Bromeliaceae family members or container-grown specimens are permitted.
19. Plants on state conservation/native plant list are allowed if grown by the exhibitor or obtained in a legal manner.
20. The following are **not** permitted in the Design Division:
  - a. **Painting, flocking, glittering or dyeing** of fresh plant material in any manner.
  - b. Artificial flowers, foliage, fruits and vegetables.
  - c. Silk, plastic or other imitation plant material.
  - d. Manufactured items simulating plant material.
  - e. Invasive plants.
  - f. American and other national flags.
  - g. Living members of the animal kingdom and/or taxidermal representations.
  - h. Food items.
21. The following non-plant material **are** permitted:
  - a. Accessories and featured objects.
  - b. Dinnerware inspired by the form of a plant, such as apple-shaped plate, floral-motif napkin ring, etc.
  - c. Objects if permitted by federal, state and/or local regulations, such as feathers, antlers, coral, horns, starfish, sponges, sea fans, shells, nests, or manufactured or crafted simulations of birds, animals, etc.
  - d. Special lighting not requiring electrical source
  - e. All staging properties, such as panels including staging panels, frames, pedestals, columns, boxes, cubes, underlays, etc.
22. Advanced registration with the Design Entries Chair, Sue Lord, is required no later than **April 15, 2019.**
23. The exhibitor is required to conform to the stated description and limitations of the Design type if named in the class.
24. Rules for Design Types, Table Designs and Table Appointments are printed in the *Handbook for Flower Shows*, Chapter 7 pp. 73-77.
25. Finished exhibits must be approved by the Design Classification Chair before exhibitor leaves the show room (library) on the day of entry.

# *Division II – Design*

## *Flowering Fiction*

Eligible for the People's Choice Award and the William Bartram Award

### **Section A.            Dynamic Genres**

#### *Class 1. Free Verse*

Up to four Creative Designs staged on a round pedestal top, 18" in diameter, 31" tall against a white brick column 20" wide. Underlay required.

Consultant: Susan Lord

#### *Class 2. Monologue*

Up to four Featured Plant Material Designs staged on a bookcase 42" high in a space 35" wide x 24" deep. Tri-fold staging panel 27 ½ "H x 20" W with two 9 ¾ "extensions and underlay required by exhibitor. Staging panel available at Dollar Tree stores. Panel may be painted, covered with fabric, or color-treated in other artistic manners.

Consultant: Mariette Wooden

*Class 3. Magical Realism* A novice class open to anyone who has not yet won a blue ribbon in any NGC flower show.

Up to four Functional service trays for one provided by the exhibitor with appropriately sized design unit staged on a cabinet 27 "tall, 36" wide x 18" deep covered in black cloth by the show committee. Against a cream background. Place mat permitted.

Consultant: Beverly Williams

#### *Class 4. Short Stories & Novellas*

Up to four Petite Designs centered on a bookcase 42" high in a space 35" wide x 24" deep. 12" x 12" underlay and 12" x 12" staging panel required by exhibitor.

Consultant: Carolyn Stevens



## *Division III – Education Rules*

1. All General rules apply. See p. 6 of this schedule.
2. Registration will be in advance with the Education Entry Chair, Kathleen Lunman.
3. Exhibits will be placed in the Youth section of the library on a square card table 33" x 33" covered with a black cloth.
4. Education Exhibits may be the work of more than one individual.
5. Plant material is not required but is encouraged where appropriate.
6. No artificial plant material is permitted.
7. Exhibits should convey educational facts quickly and persuasively in an interesting manner. Posted printed material should be large enough to read from a distance of three feet.
8. Handout materials add to educational value.

# *Division III – Education*

## *Supporting Characters*

### **Section A. Active Voice**

#### **Class 1. Exhibit 1. *The Giving Tree***

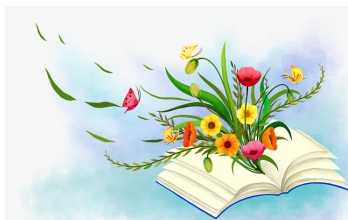
An exhibit describing Amelia Island's Heritage Trees Project. Exhibitor: Peg Lehosit

A heritage tree is any native tree designated as irreplaceable by the City of Fernandina Beach, due to its size, age, historic, aesthetic, or cultural significance. Any citizen, property owner, or city official may nominate a tree to be designated as a heritage tree. The nomination is researched by the City Arborist and forwarded to the City Commission for official designation. Activist and Bartram Garden Club member, Peg Lehosit has volunteered many hours working with both city staff and property owners to complete the nomination forms and shepherd the trees through the approval process. Generally, the tree must be a native tree like a Live Oak, Southern Magnolia, Southern Red Cedar or other native species, and have a diameter breast height (DBH) of at least thirty-six (36) inches.

Please contact Planning Manager Kelly Gibson ([kgibson@fbfl.org](mailto:kgibson@fbfl.org)) if you are interested in nominating a heritage tree.

#### **Class 1. Exhibit 2. *The National Gardener***

An overview of National Garden Clubs, Inc., and how The Bartram Garden Club, Inc. and our affiliate, the Federation of Garden Clubs, Inc. support their objectives. Exhibitor: Kathleen Lunman





## *Division IV - Youth Rules*

1. All General and Design Rules on pages 6 and 11 of this schedule apply.
2. Registration will be in advance with Youth Entries Chairmen, Beverly Williams or Sue Lord.
3. All entries will be accepted April 25, 2019 between **11:00 a.m. and 6:00 p.m.**
4. Exhibitors must remove all exhibits by 6:00 p.m. on April 27, 2019 but not before 5:00 p.m.
5. Youth entries are by invitation only.
6. Entries will include name and grade of exhibitor on an entry card provided by the show committee.
7. All design exhibits should be created solely by the exhibitor.
8. Exhibitor will list the plant materials used on an index card provided by the show committee. No artificial plant material is allowed.
9. A brief interpretation of the design is allowed on an index card provided by committee.



# *Division IV – Youth*

## *First Editions*

Eligible for the Bartram Garden Club Award of Participation

### **Section A. Scholastic Book Club**

Classes are staged on a semi-circular white countertop 40” high, 14” deep with a teak backboard 9 ½” high. Footprint of exhibits should be no larger than 10” square. No height restriction. Exhibitor should list all materials used on the index card provided by the flower show committee.

#### **Class 1. Elementary**

##### *Open Book*

A class of 4 Creative or Traditional designs open to elementary students. Designer is free to choose book title for interpretation using fresh and/or dried plant material.

#### **Class 2. Middle-School**

##### *Funky Junk: Recycle Rubbish into Art!*

Creative Assemblage Design made of **reused/recycled materials**. Some fresh and/or dried plant material is required.

# *Division V – Botanical Arts*

## *Romantic Drama*

All General and Design Rules on pages 6 and 11 apply, including a card listing all plant material used in the design. All exhibits must contain some plant material. No artificial plant material is permitted in any exhibit.

### **Section A. Reading Circle**

#### *Class 1. Wreath, In Summer*

A wreath no larger than 18" in diameter when finished using fresh and/or dried plant material, hung on a birch veneered panel 24" W x 82" H. Hook provided by show committee. Accessories or featured object permitted. Wreath form may be created by the exhibitor or manufactured.





## *About The Bartram Garden Club, Inc.*

The Bartram Garden Club was chartered in September 2016. Our mission is promoting the love of gardening, floral design, civic beautification and environmental responsibility in our community.

We meet the second Thursday of the Month – September thru May at the GFWC Woman's Club of Fernandina Beach 201 Jean Lafitte Blvd, Fernandina Beach, FL 32034 at 10:30am with social time starting at 10am.

We are a member of the National Garden Clubs, Inc., Deep South Region and the Florida Federation of Garden Clubs, Inc. and we strive to support their objectives and projects.

Membership is open to all regardless of gender, age, race, ethnicity, physical ability or religious affiliation.

Visit our website [www.bartramgardenclub.org](http://www.bartramgardenclub.org) and join us on Facebook.